



COMPRESSOR PACKAGES



MAYEKAWA USA
Oil and Gas, Chemical Division

<https://mayekawa.com/americas/mna>

What makes **MAYEKAWA** Packages Different?



MYCOM Compressors

Our pride and joy!



MYCOM screw compressors offer exceptional flexibility, boasting the broadest **pressure and capacity range** in the market. Their exceptional efficiency translates to significant **energy savings**, making them a preferred choice for environmentally conscious operations. Additionally, MYCOM compressors are built to last. With an impressive **long life span** up to 50 years, MYCOM users enjoy reliable performance and the lowest **Total Cost of Ownership**.

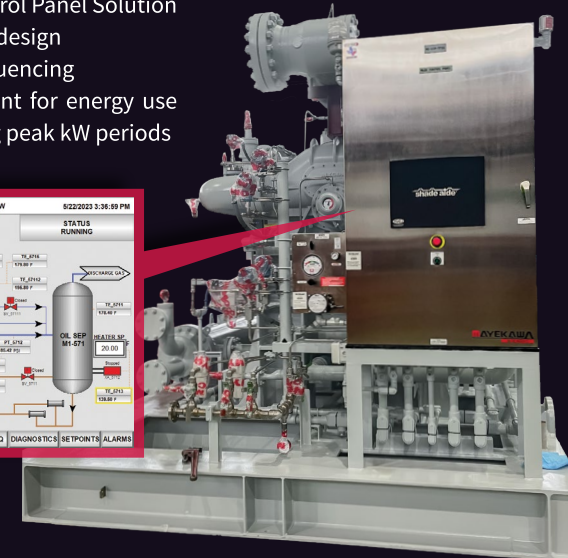
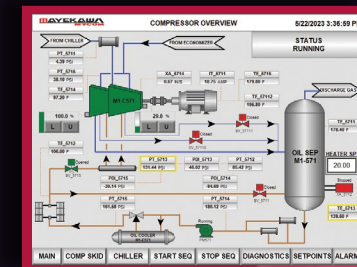
Whether it's for oil & gas, petrochemical, chemical processing or other sectors, MYCOM screw compressors provide unmatched reliability and efficiency to meet diverse needs.

MYCOM Custom PLC

Programmable Logic Controllers

MYCOM's PLC-based automation solutions provide a non-proprietary, turnkey solution utilizing commonly used industrial components. Effectively maximizing efficiency and reliability, while minimizing maintenance requirements and saving valuable time.

- Engineered Control Panel Solution
- Custom graphic design
- Compressor sequencing
- Power curtailment for energy use reduction during peak kW periods



Mayekawa USA
Oil and Gas,
Chemical Division

Tel:
(1) 832-975-0975

Email:
customerservice@mayekawausa.com

Address:
29875 Medline Ln
Katy, TX
77494, U.S.A.

+ **100**
Years of experience

+ **100,000+**
Screw compressors
installed worldwide

+ **API 619**
Standard Applied

Our Screw Compressor Packages.

Supplying the US market from standard refrigeration packages to complex, high-spec packages since 1967.



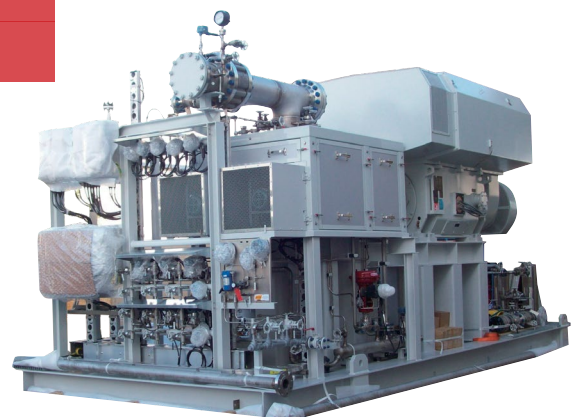
LNG BOG Compressor - Brazil



Vapor Recovery Compressor - Vietnam Offshore
3225MMC / 600kW



Refrigeration Package - Mayekawa USA
3225SSC / 1000HP



Flare Recovery Package - Mayekawa USA
200M / 700kW



Biogas Package - Mayekawa USA
3225SSC / 900HP



LPG Transfer Compressor - Mexico
6HK / 45kW



NH₃ BOG System - Morocco
160M / 130kW



CO₂ Liquefaction Plant - Korea
200S / 230kW



NH₃ Recovery / Purification Plant - China
2520SSC / 280kW



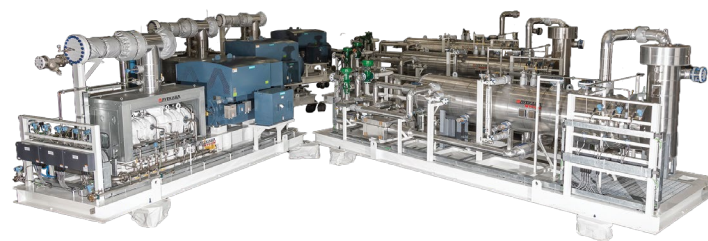
PSA Compressor - Russia
400L / 1320kW



LNG BOG Compressor - Turkey
400S / 830kW



Refrigeration Package - Mayekawa USA
250VLD / 600HP



Propane Compressor Package - Mayekawa USA
3225SSC / 1500HP



Gas Turbine Booster - Nigeria
GH250S / 550kW



Gas Chiller - Africa Offshore
4032XLLL / 2400kW

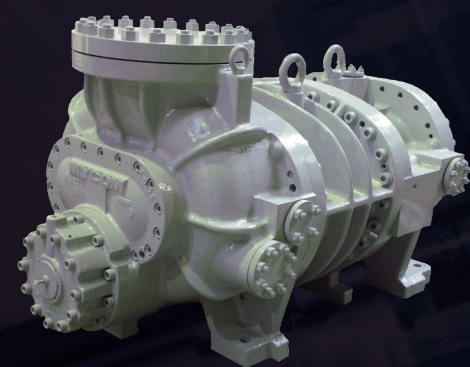


Propane Refrigeration Compressor - Korea
4032XLLLC / 3000kW

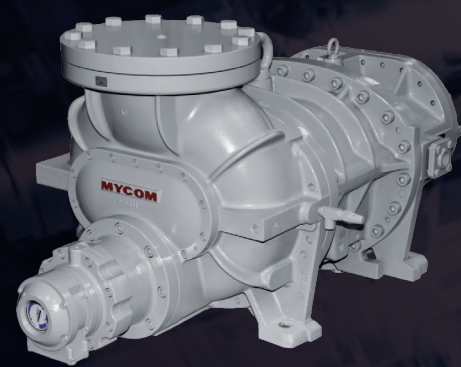
MYCOM

Screw Compressors

UD-Series



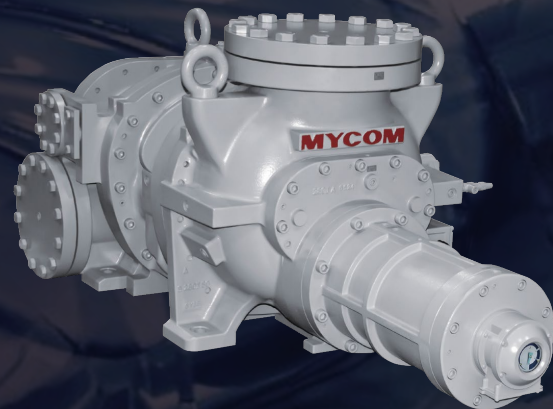
V-Series



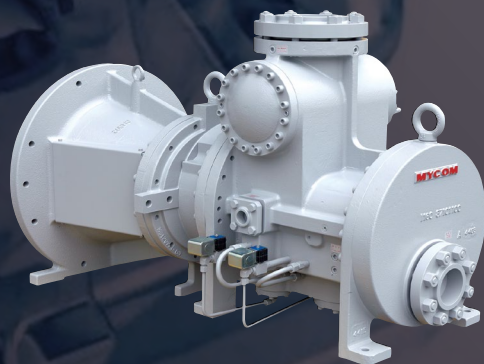
C-Series



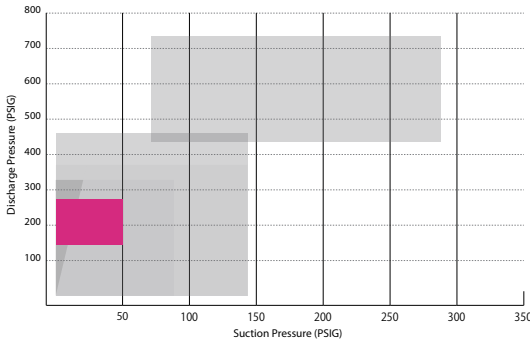
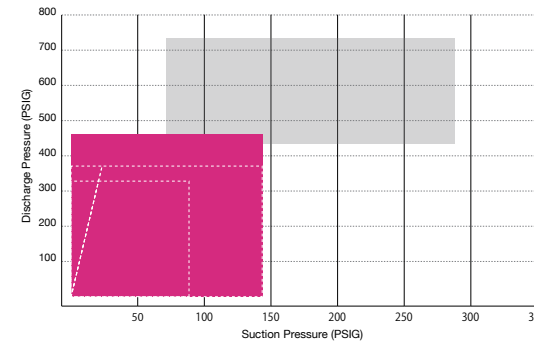
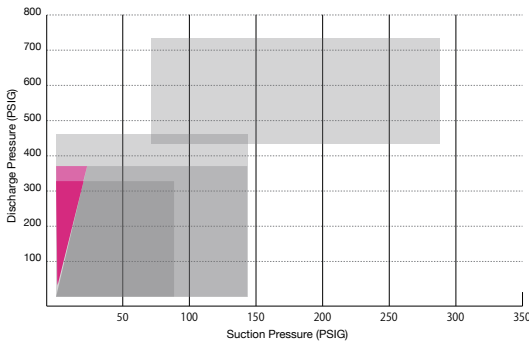
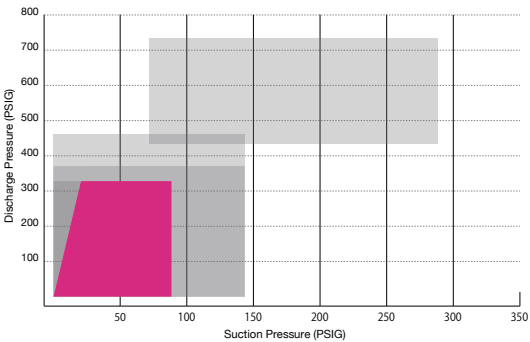
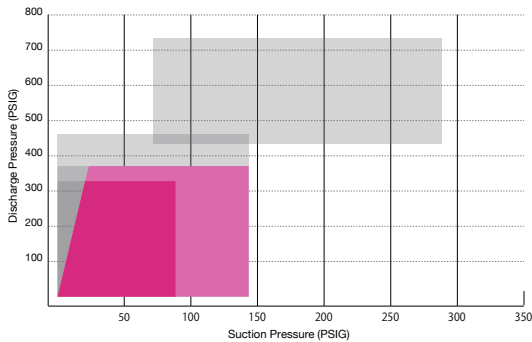
J-Series



i-Series



Operating Pressure Range*



	Theoretical Displacement			
	50Hz		60Hz	
	CFM	m³/h	CFM	m³/h
125SUD	116	197	139	237
125LUD	174	295	210	356
160SUD	244	415	294	499
160MUD	305	519	367	624
160LUD	366	622	441	749
200SUD	477	810	574	975
200MUD	600	1020	718	1220
200LUD	712	1210	859	1460
250SUD	930	1580	1118	1900
250MUD	1165	1980	1401	2380
250LUD	1389	2360	1672	2840
320SUD	1866	3170	2248	3820
320MUD	2331	3960	2802	4760
320LUD	2790	4740	3355	5700
320LLUD	3295	5600	3966	6740
400SUD	3814	6480	4591	7800
400MUD	4791	8140	5768	9800
400LUD	5709	9700	6886	11700
400LLUD	6769	11500	8122	13800
400XLUD	7593	12900	9182	15600
400XXLUD	Please contact us for information			

	Theoretical Displacement			
	50Hz		60Hz	
	CFM	m³/h	CFM	m³/h
160VSD	244	415	294	499
160VMD	305	519	367	624
160VLD	366	622	441	749
200VSD	477	810	574	975
200VMD	600	1020	718	v1220
200VLD	712	1210	859	1460
250VSD	930	1580	1118	1900
250VMD	1165	1980	1401	2380
250VLD	1389	2360	1672	2840
320VSD	1866	3170	2248	3820
320VMD	2331	3960	2802	4760
320VLD	2790	4740	3355	5700

	Theoretical Displacement			
	50Hz		60Hz	
	CFM	m³/h	CFM	m³/h
1612SSC	244	415	294	499
1612MSC	305	519	367	624
1612LSC	366	622	441	749
2016SSC	477	810	574	975
2016MSC	600	1020	718	1220
2016LSC	712	1210	859	1460
2520SSC	930	1580	1118	1900
2520MSC	1165	1980	1401	2380
2520LSC	1389	2360	1672	2840
3225SSC	1866	3170	2248	3820
3225MSC	2331	3960	2802	4760
3225LSC	2790	4740	3355	5700
3225LLC	3296	5600	3967	6740
4032SSC	3814	6480	4591	7800
4032MSC	4791	8140	5768	9800
4032LSC	5709	9700	6886	11700
4032LLLC	6769	11500	8122	13800
4032XLLLC	7593	12900	9182	15600

	Theoretical Displacement			
	50Hz		60Hz	
	CFM	m³/h	CFM	m³/h
170JS	230	390	276	469
170JM	298	507	359	610
170JL	388	659	467	793
220JS	504	856	606	1030
220JM	656	1114	789	1340
220JL	852	1447	1025	1741
280JS**	1110	1886	1335	2269
280JM**	1443	2451	1736	2949
280JL**	1878	3190	2260	3839
280APJS**	1110	1886	1335	2269
280APJM**	1443	2451	1736	2949
280APJL**	1878	3190	2260	3839

	Theoretical Displacement			
	50Hz		60Hz	
	CFM	m³/h	CFM	m³/h
i125S	116	197	139	237
i125L	174	296	210	356
i160S	244	415	294	499
i160M	305	519	367	624
i160L	366	622	441	749

* Please consult us for further details.

Mayekawa Factories



Katy, TX North American HQ

Manufacturing facility of compressor package systems, pressure vessels and heat exchangers.

Total area:	6,690m ² (72,000sqf)
Employees:	160
Products:	Standard refrigeration units, chiller units, process cooling units, special chiller units, API-applied units
Standards:	ASME, ASHRAE, AWS, OSHA, API, UL, CSA



Moriya, Japan

Our largest production center, and where revolutionary products are developed and manufacture on after another. With operations beginning in 1970, Moriya Plant has developed an integrated facility from research and development to manufacturing and sales, and after sales services.

Total area:	220,000m ² (2,368,060sqf)
Products:	Compressors, standard refrigeration units, standard/special chiller units, process cooling units, API-applied units, process gas compressors, food machinery (robots, freezers, etc.)
Standards:	ISO9001, METI Roukhou (for nuclear devices), API, ASME, HPSL, SEL



Cuernavaca, Mexico

Cuernavaca plant started production in 1985 and continued to expand its role as a production center for compressors and oil pumps, serving Mayekawa's global markets. Casting and processing plants are situated next to the main production plant to achieve streamlined production.

Total area:	20,000m ² (215,278sqf) <i>Expanding to 35,000m² (376,737sqf) in 2024</i>
Employees:	300
Products:	Reciprocating & screw compressors, oil pumps, parts, cast metal products
Standards:	ISO9000, ISO14000, Industria Limpia, OSHAS18000, NK (casting)



Aruja, Brazil

Mayekawa's second largest plant. Mother plant for the Latin American Block.
Total area: 13,900m² (149,618sqf)
Employees: 255
Products: Design, manufacture, and sales for screw and reciprocating compressor units, chillers, evaporative condensers, chemical units, service and parts sales for compressor units and Toridas deboning machine
Standards: ISO9001, ASME, IEC-60204-1, CRCC Petrobras



Brussels, Belgium

Total area: 5,400m² (58,125sqf)
Employees: 150
Products: Standard refrigeration units, standard/special chiller units, process cooling units, process gas compressors, API-applied units
Standards: CE mark, ATEX, TR-CU, ISO9001, ASME, API619



Changwon, South Korea

Total area: 6,500m² (69,965sqf)
Employees: 146
Products: Standard refrigeration units, standard/special chiller units, process cooling units, process gas compressors, API-applied units
Standards: ISO9001, ISO14001, KGS/OHSAS18001, ASME, U-stamp, SEL, GOST-R



Chennai, India

Total area: 6,690m² (72,000sqf)
Products: Standard refrigeration unit, chiller unit, process cooling unit, special chiller unit, API-applied unit
Standards: ASME, ASHRAE, AWS, OSHA, API, UL, CSA



Higashi Hiroshima, Japan

Total area: 136,000m² (1,463,892sqf)
Products: Control panels, environmentally-friendly products such as "Eco Cute" heat pumps, cast iron products, aluminum ware



Saku, Japan

Total area: 5,000m² (53,820sqf)
Products: Deboning systems for meat and poultry



Smederevo, Serbia

Total area: 5,616m² (60,450sqf)
Employees: 110
Products: Standard refrigeration units, standard chiller units, heat pump units
Standards: CE, EN, PED

About Mayekawa.



OUR HISTORY



Established since **1924**
In the US since **1967**

Vision.

Our vision is to become the No. 1 compressor manufacturer in the industry.

Mission.

Create a sustainable future by pursuing optimal systems, equipment and technology.

Strategy.

Innovation by collaborative creation with our clients and partners.

- **1924** Kisaku Maekawa founded Mayekawa & Co. in Tokyo, Japan.
- **1961** Established MYCOM brand.
- 1966** Started production of screw type refrigeration compressors.
- 1967** Established **MAYEKAWA U.S.A. Inc.**, in Torrance, CA.
- **1974** Developed the world's first compound type screw compressor 'C-series'.
- 1978** Delivered screw helium compressors for super-conductivity application to Fermi National Acceleration Laboratory in U.S.A.
- **1980** Delivered vapor recovery screw compressors for offshore oil platforms to the PTT Public Company Ltd. in Thailand.
Developed double helical rotor type oil pumps.
- 1981** Established our plant in Torrance, CA.
- 1988** Started compressor production in Cuernavaca plant in Mexico.
- **1991** Developed Variable Vi Mechanism integrated type screw compressor SCV-Series.
Developed the 'O profile', our original screw rotor configuration.
- 1993** Established MAYEKAWA USA Oil and Gas, Chemical Division in Torrance, CA.
- **2001** Delivered the world's largest compound helium screw compressors to CERN, France/Switzerland.
Developed large-sized compound two-stage compressor.
- 2008** Developed expander integrated turbo compressor.
Developed Automatic Variable Vi Mechanism integrated type screw compressor J-series and J-rotor profile.
- **2022** Established a new plant in Katy, Texas by integrating refrigeration assembly plant and chemical package system production plant.
- 2023** Developed 360GV screw compressor.
- 2024** Celebrating 100 years of accomplishment and progress.

MAYEKAWA USA, INC.

<https://mayekawa.com/americas/mna>

Tel: +1 (832) 975-0975
24 Hr Service: +1 (800) 836-9266
Email: customerservice@mayekawausa.com

MAYEKAWA CANADA, INC.

<https://mayekawa.com/americas/mna>

Vancouver: +1 (604) 270-1544
Calgary: +1 (403) 250-1554
Toronto: +1 (905) 564-0664